

TACK-tieTM WALL TIES

STAINLESS STEEL WALL AND MOVEMENT TIES FOR AIRCRETE & CLAYBLOCK THIN JOINT SYSTEMS



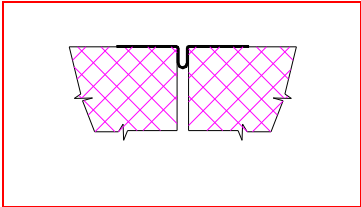
L-200 Abutment Tie
 For connecting perimeter walls to dividing walls.
 Can also be used for fixing back to steelwork and as a starter wall tie. Requires a fixing.
 Manufactured in 0.6 and 1.5mm thick material and various lengths.

JJPW Connector Tie
 For connecting perimeter walls to dividing walls providing course levels are the same height.
 Can be manufactured in lengths to suit application.

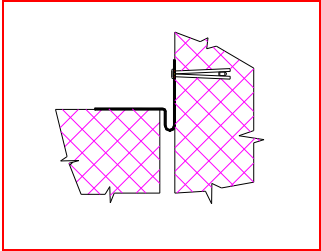


JJ-Range Cavity Wall Tie
 For use when two skins of Thin Joint Blockwork are being built at the same time and the course heights are the same.
 This product range now covers cavity widths from 50mm up to 200mm.

TMJ-200 Movement Tie
 Movement Tie for use in Vertical Movement Joints. The tie is mortared into the joint, (no need for a slip joint). The excess material in the loop allows for expansion and contraction.



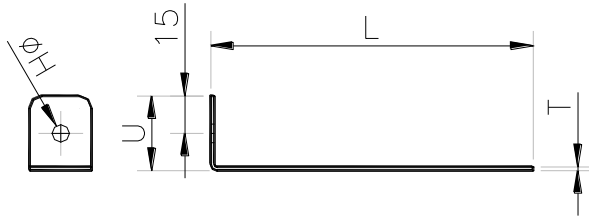
SMJ-200 Movement Tie
 Movement Tie for fixing back to steelwork, existing masonry, wind posts etc. The tie is mortared into the joint, (no need for a slip joint) and fixed back to the steelwork etc. The excess material in the loop allows for any movement.



In addition to the above equipment we also offer a bespoke manufacturing service for any special ties or hardware requirements.

L-200 ORDERING CODE – (specials subject to minimum quantity)

Standard L-200 – U=30mm / L=130mm / H=7 / T=0.6mm



Special 'L' Products Ordering Code

L-000S – U – L – H – T

Example 1 – L100S -50 – 7 – 0.6

L-100mm long **Special 50mm** up-stand – 7mm dia hole – **0.6mm** material

Example 2 – L175S – 50 – 0 – 1.5

L-175mm long **Special 50mm** up-stand - **no hole** – 1.5mm material

JJ Range (Thin Joint to Thin Joint Construction)

REF	TYPE	TIE LENGTH	CAVITY WIDTH
JJ-210	4	210	50mm
JJ-235	4	235	75mm
JJ-260	3	260	100mm
JJ-285	3	285	125mm
JJ-310	3	310	150mm
JJ-335	3	335	175mm
JJ-360	3	360	200mm

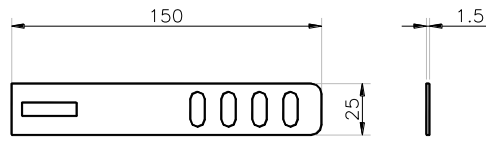
JJPW – Connector Tie Standard Length 220mm



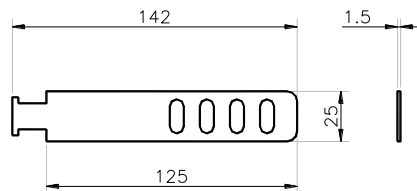
REF	LENGTH
JJPW	220mm (standard)
JJPW-150	150mm

Other lengths can be manufactured upon request.
(subject to minimum quantity)

TST-25/5 – Tackburn Sliding Tie to suit 25mm x 5mm section



TCT-21/18 – Tackburn Channel Tie – 21/18 Channel



UK Patent Application Number 9900667.8

TACKBURN LIMITED

22 Pebworth Close, Church Hill North, Redditch, Worcs. B98 9JX
Tel / Fax +44 (0)1527 68559
Mobile 0786 698 4313